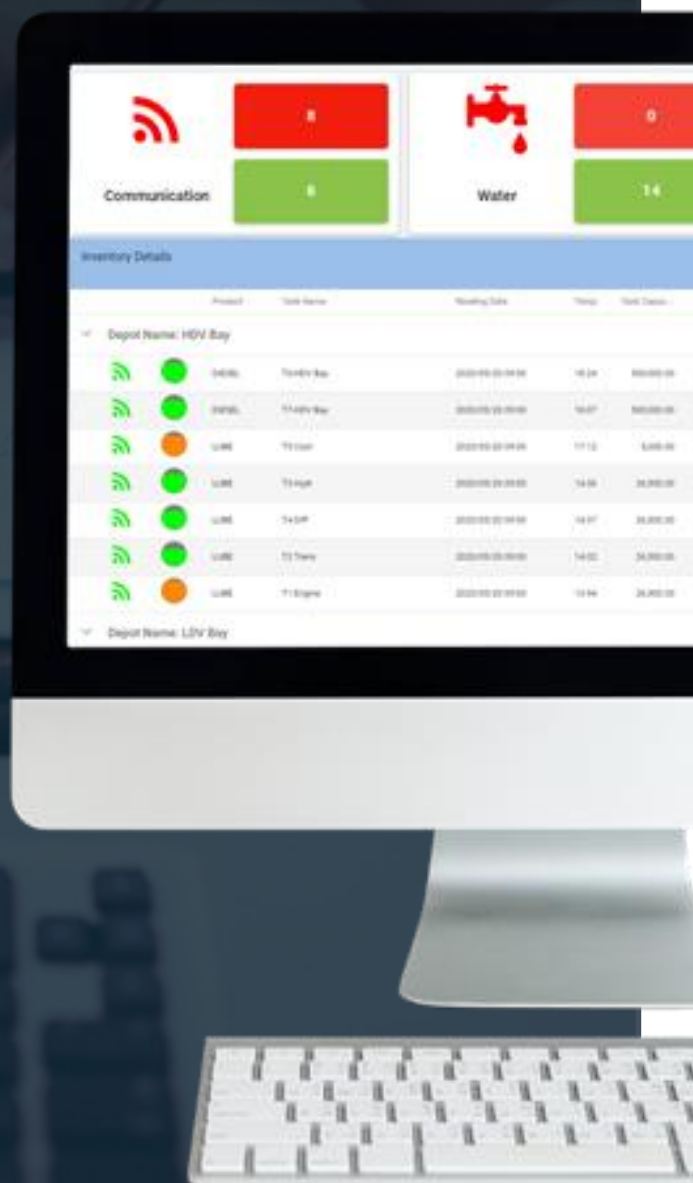


# dataFLEX360

## Commercial & Industrial Fuel Management Reporting Suite



- ✓ Reliable
- ✓ Accurate
- ✓ Near real-time insight
- ✓ Integrated fuel & fleet reporting

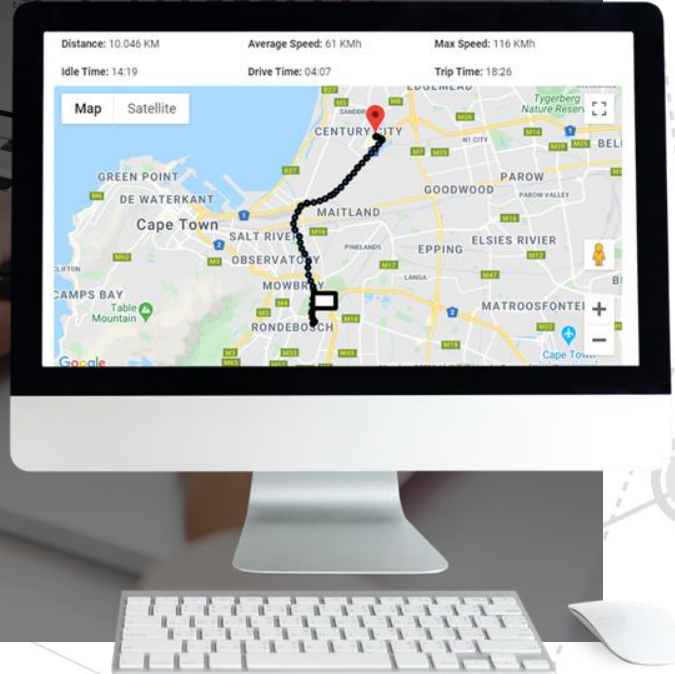


# dataFLEX360

Actionable insight.

Integrated fuel management reporting.

Accurate, reliable, relevant and near real-time reporting is a critical success factor in delivering true value to our customers. dataFLEX360 is Gilbarco Veeder-Root's integrated fuel and fleet reporting platform, providing easy to use reporting dashboards for all your commercial and industrial fuel management reporting needs.



## Why dataFLEX360 is right for you

**dataFLEX360** is a web based, cloud hosted reporting platform. The benefit of this for our customers is that there is no significant investment in IT infrastructure at each site to collect transactions and generate reports.

All fuel transactions are delivered to the **dataFLEX360** platform through our on-site eNance controllers in near real-time, with transactions appearing on the dataFLEX360 dashboards within 15 minutes of the actual event taking place on-site. The **dataFLEX360** platform has also been developed using an open architecture model.

**dataFLEX360** allows for seamless integration with OEM telematics data being generated by the HME category of assets, connecting to OEM platforms and extracting relevant fleet information to integrate into reporting.

**dataFLEX360** creates a single view of information across your commercial and industrial fuel and fleet operations.

## Who should use dataFLEX360?



Mining operations



Customers using fuel at home based depots



Oil Companies selling fuel



Facilities management companies selling fuel

# Offering you an advanced suite of functionality

## Actionable insight into your fueling operation



### Reconciliation

Core foundation of GMS Connect is Reconciliation, ensuring solution accuracy

- System managed to industry standard tolerances
- Reconciliation ensures accuracy of information
- Exceptions generated are actioned immediately
- Industry standards are set independently
- Losses and abuse is identified early
- Corrective actions highlighted and implemented
- Exceptions drive targeted preventative maintenance
- Reduces burden on customer to manage the solution



### Fuel stock management

Easy to use, graphical representation of data with summary to detail functionality

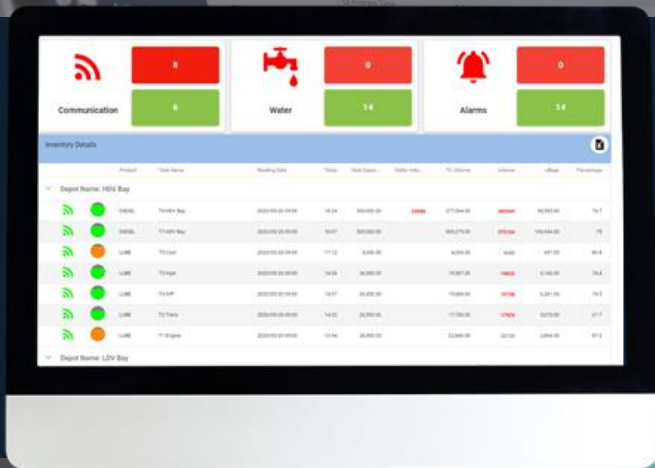
- Summary to detail widgets
- Controls and monitors multiple products
- Controls and monitors multiple sites
- Hourly update of tank levels
- Immediate update of tank alarms
- Centralised control of product can be achieved
- Customer sets warning levels and delivery levels
- Alarms managed centrally, reducing HSSE risk
- Water content monitored preventing engine damage



### Integrated dashboard

Integrated dashboard widgets allow incorporation of data from various sources,

- Dashboard widgets allow users to configure dashboards
- Include data from various sources
- Choose layout and display order
- Combine fuel, fleet, production and other external data to create a simple management overview
- Reduce complex reporting requirements
- Highlight important operational data
- Manage exceptions easily from a single dashboard



**360° view of your mining, commercial or industrial operation.** From your site, tanks and assets to the head office.



### Single pane of glass

Integrating fuel, fleet, production and other external data to create a "single pane of glass" view across the operation

- Consolidate information from various systems
- Open Architecture allows for easy integration
- Multiple dashboards for different functions
- User definable dashboards allows for ease of use
- Single view across multiple operational areas
- Create a "Golden KPI" using all inputs
- Regular updates allow proactive corrective measures
- Reduce complex reporting environments
- User customisation creates familiarity and personal feel
- Web-enabled system which is accessible from any device



### Automated delivery control

Controls the delivery process to ensure that you only pay for what was received and allows for unattended delivery

- Electronic delivery ticket per delivery or totalizer per day
- Temperature compensated volume
- Delivery tickets displays within 15 minutes of transaction completion
- Electronic data can be integrated into ERP system
- Pay only for product received
- Independent validation of OilCo bill
- Eliminate product losses through temperature



### iNtegrator

Creates up to 4 unattended, automated shift closes, no human intervention

- Resides on the ENHANCE controller platform
- Configurable to match customer shift patterns
- Communicates electronically with EMR4 and ATG
- One hard shift per day
- HSSE risk reduced as readings are done electronically
- Leverage existing technologies to upgrade
- Reconciliation tied to shift, accountability ensured
- Electronic delivery ticket verification



### Comprehensive fleet functionality

System includes multiple modules such as preventative maintenance, inspections and events

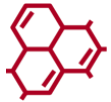
- Single solution meets all fuel & fleet requirements
- Easy to use interface combines relevant data for ease of reference
- Compare data from various systems to determine trends and highlight exceptions



### OEM interfaced

Reduced solution TCO through utilisation of exiting OEM technologies and data streams

- Connects with OEM servers electronically
- Collect data from OEM telematics and on-board systems
- Reduce TCO as existing technology and data streams used
- Improve information quality as fuel and telemetry data combined and compared to highlight exceptions
- Quick activation of fleet functionality with no capital investment
- Track utilisation and drive efficiencies



### Agile module development

Lighting Tower module developed for a customer specific need, illustrates agility in providing solutions

- Dashboard for controlling lighting towers
- Central control operation of lighting towers
- Scheduler allows for easy establishment of operational schedule
- Fueling sheet direct bowser fuelling activities
- Reduce operational costs as;
- Bowsers only refuel as towers requiring fuel
- Eliminate need for person to manually switch on/off towers
- Service schedules are done on hours of operation and not calendar days
- Eliminate production downtime due to blackouts

# A single view.

# Across all your sites & assets.



### Active drill through

From a summary graph, easily drill down to the source data to investigate issues

- Actively drill down from summary dashboard to underlying information
- Simplifies investigation of exceptions
- Reduces time customer spends pulling reports

## Reporting. Simplified.



Transaction Listing report | Fuel Consumption Report | Equipment Listing | Tank Capacity Exceeded Report | Multiple Fill report | Trip Reports | Drill Down On Trip report | Latest tank Levels Report | Tank Inventory History report | Tank Reconciliation | Meter Reconciliation – Fixed Site | Meter Reconciliation Bowser | Tank Delivery Report

# dataFLEX360

**A 360° view into your  
entire fuel operation**

For mining.  
For industrial.  
For commercial.

Find out how your site could benefit from  
360° insight.

Email: [GVR-mea-enquiries@gilbarco.com](mailto:GVR-mea-enquiries@gilbarco.com)  
[www.gilbarco.com/mea](http://www.gilbarco.com/mea)

