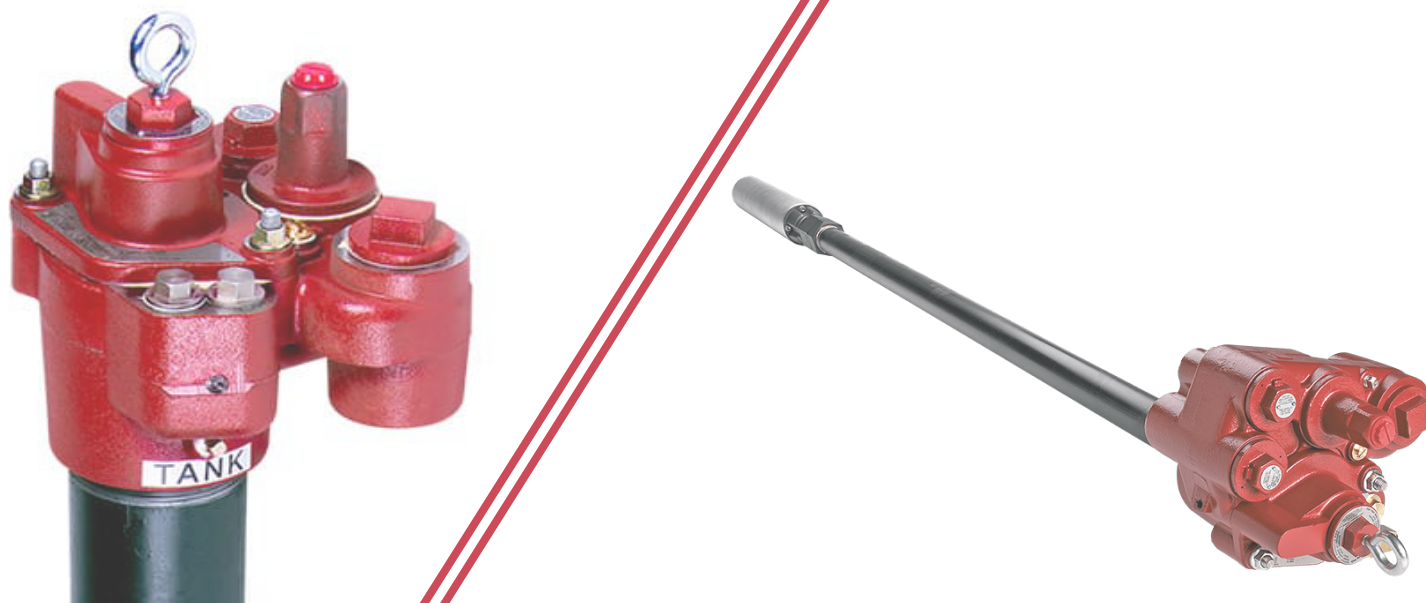


Submersible Turbine Pumps

Product Line - India

Submersible Turbine Pumps



► Benefits

Superior Motor Design

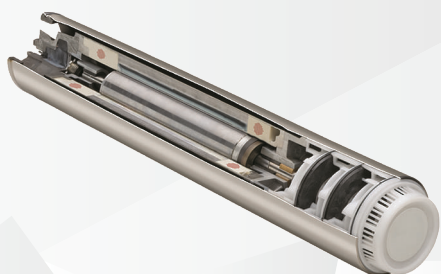
Higher flow rates, lower power consumption, and increased safety and reliability:

- **Up to 5% Increased Flow** – Improved stator and receptacle housing design provides larger fuel paths.
- **8% Less Power Consumption** – More efficient motor design results in 8% reduction in wattage.
- **Better Quality** – Red Jacket's motor manufacturing yields improved quality, which means more station uptime than other STPs on the market.
- **Universal Compatibility** – Fewer parts to stock.
- **Improved Reliability** – Improved bearing design and upgraded insulation yield longer motor life.
- **Increased Safety** – Maximum temperature remains ~125 degrees cooler vs. competitive models. Enhanced connectors separation meets latest flameproof standards.

Advanced Packer Manifold Design

Fast installation, simple service and testing, and sets the standard for electrical and environmental safety:

- **Built-in Isolated Contractor's Box** – Electrical connection housing is built into the manifold and is completely isolated from the fuel path
- **Easy to Install and Service** – No adjustment required to fit yoke, assembly is quick.
- **Increased Electrical Safety** – Automatic electrical yoke disconnects upon removal of extractable bolts.
- **Environmentally Friendly** – Automatic breaking of extractible seal upon bolt removal ensures automatic fuel drain back into tank, protecting the environment from contamination and site owners from related liability.
- **Innovative Check Valve Design** – "Open" setting makes for easier line tests and servicing.



Technical Specifications

► STP Technical Specifications

Fuel Compatibility	<ul style="list-style-type: none">• 100% Diesel• 100% Gasoline• Methanol concentrations up to 15%• Ethanol concentrations up to 15%• MTBE, ETBE, or TAME concentrations up to 20%																																		
Motor Sizing	<ul style="list-style-type: none">• 3/4 HP, 50 HZ, 1-phase• 1 1/2 HP, 50 HZ, 1-phase• X3 1 1/2 HP, 50 HZ, 1-phase, high pressure• LP 2 HP, 50 HZ, 1-phase, low pressure• 2 HP, 50 HZ, 1-phase																																		
Hardware Construction	Column Pipe and Riser: <ul style="list-style-type: none">• Standard Packer Components: <ul style="list-style-type: none">• Stainless Steel																																		
Operation Environment	<ul style="list-style-type: none">• Class 1, Group D Atmosphere• Low Corrosion Environment• Dry Sump Space (No Water Ingress)																																		
Installation Depth Range	<table><tr><th rowspan="2">Variant</th><th rowspan="2">UMP Power (HP)</th><th rowspan="2">Model</th><th colspan="2">Distance from Eye Bolt to Inlet</th></tr><tr><th>Min. Distance</th><th>Max. Distance</th></tr><tr><td rowspan="2">T5</td><td>0.75</td><td>P75S3-3T5</td><td>2210 (87)</td><td>3327 (131)</td></tr><tr><td>1.5</td><td>P150S3-3T5</td><td>2210 (87)</td><td>3387 (133.3)</td></tr><tr><td rowspan="2">T6</td><td>0.75</td><td>P75S3-3T6</td><td>2210 (87)</td><td>3209 (126.3)</td></tr><tr><td>1.5</td><td>P150S3-3T6</td><td>2210 (87)</td><td>3269 (128.7)</td></tr><tr><td rowspan="2">T7</td><td>0.75</td><td>P75S3-3T7</td><td>2616 (103)</td><td>4029 (158.6)</td></tr><tr><td>1.5</td><td>P150S3-3T7</td><td>2616 (103)</td><td>4089 (161)</td></tr></table>	Variant	UMP Power (HP)	Model	Distance from Eye Bolt to Inlet		Min. Distance	Max. Distance	T5	0.75	P75S3-3T5	2210 (87)	3327 (131)	1.5	P150S3-3T5	2210 (87)	3387 (133.3)	T6	0.75	P75S3-3T6	2210 (87)	3209 (126.3)	1.5	P150S3-3T6	2210 (87)	3269 (128.7)	T7	0.75	P75S3-3T7	2616 (103)	4029 (158.6)	1.5	P150S3-3T7	2616 (103)	4089 (161)
Variant	UMP Power (HP)				Model	Distance from Eye Bolt to Inlet																													
		Min. Distance	Max. Distance																																
T5	0.75	P75S3-3T5	2210 (87)	3327 (131)																															
	1.5	P150S3-3T5	2210 (87)	3387 (133.3)																															
T6	0.75	P75S3-3T6	2210 (87)	3209 (126.3)																															
	1.5	P150S3-3T6	2210 (87)	3269 (128.7)																															
T7	0.75	P75S3-3T7	2616 (103)	4029 (158.6)																															
	1.5	P150S3-3T7	2616 (103)	4089 (161)																															
Packer Manifold Access Ports	Siphon Ports: <ul style="list-style-type: none">• 2 available, 1/4" NPT• Vacuums generated up to 25 in Hg. Line Pressure Port: <ul style="list-style-type: none">• 1 available, 1/4" NPT Vent Port: <ul style="list-style-type: none">• 1 Available,1/4" NPT																																		
Check Valve Compatibility	<ul style="list-style-type: none">• Standard VR ready check valve for PLLD (410152-001)• High pressure check valve for high pressure applications (410152-002)																																		
Agency	UL Listings: <ul style="list-style-type: none">• 100% Diesel• 100% Gasoline• Gasoline and up to: 10% Ethanol, 15% Methanol, 20% MTBE, 20% ETBE, 20% TAME Other Agency Listings: <ul style="list-style-type: none">• cUL PESO Approved																																		